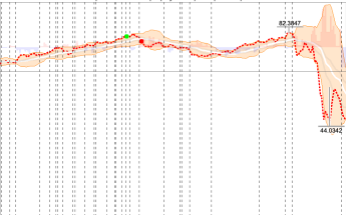
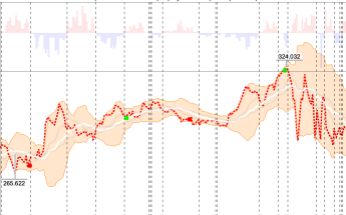


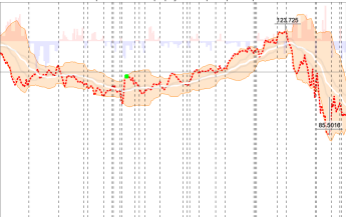
O | Return: -78.48 | Equity: 87.2 | 1.06 percent | VI: 2



COST | Return: -24.7988 | Equity: 288.65 | 3.51 percent | VI: 7



PYPL | Return: 122.244 | Equity: 481.95 | 5.62 percent | VI: 5



TSM | Return: 273.885 | Equity: 470.6 | 5.73 percent | VI: 9

